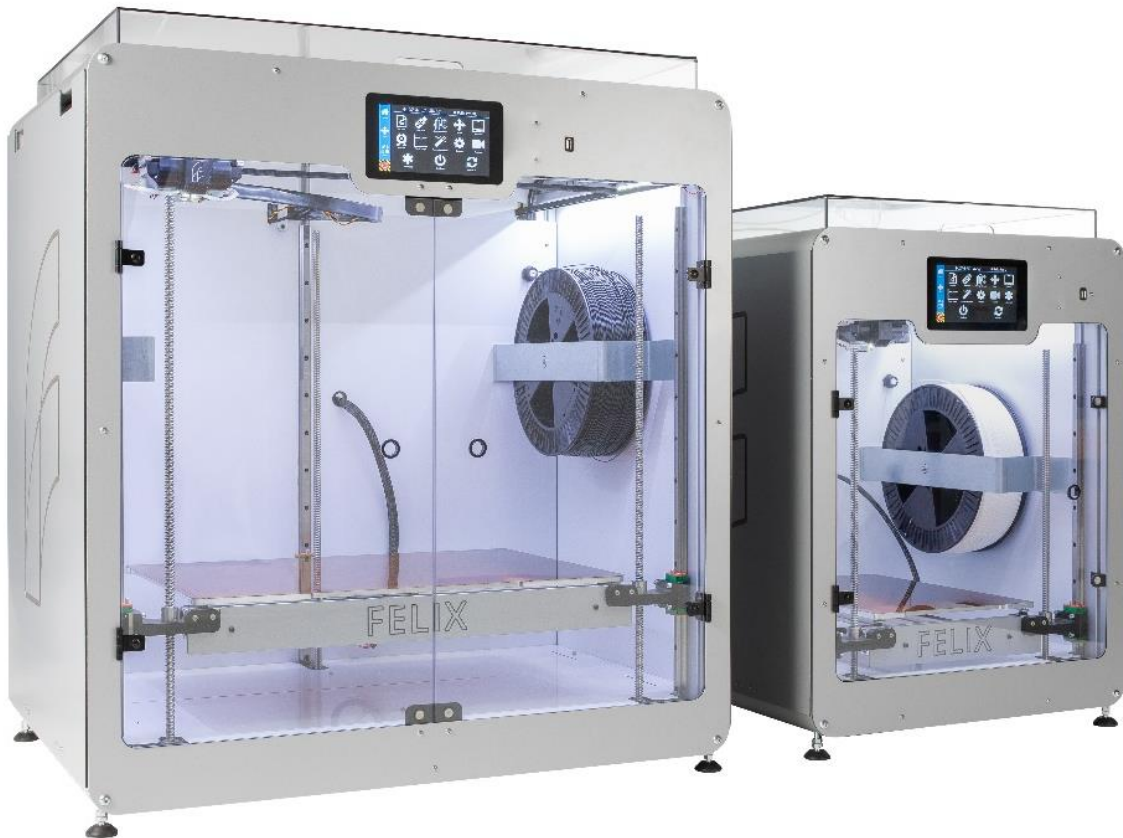


How to upload slice profiles

FELIX Pro L and XL series

7 November
2022

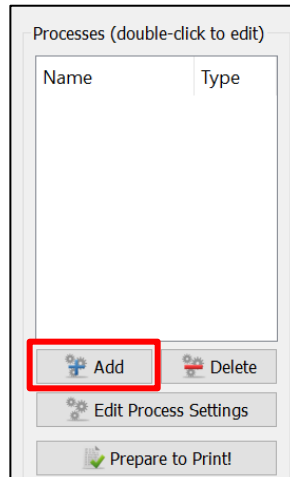
Revision 0



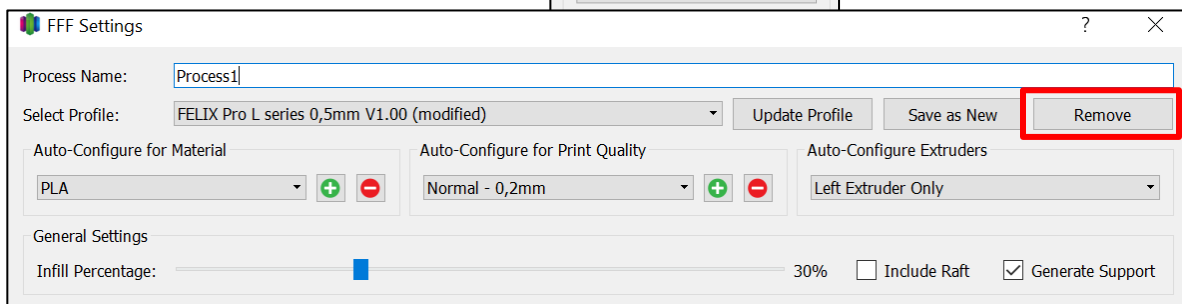
1 Upload slice profiles

1.1 Remove old profiles

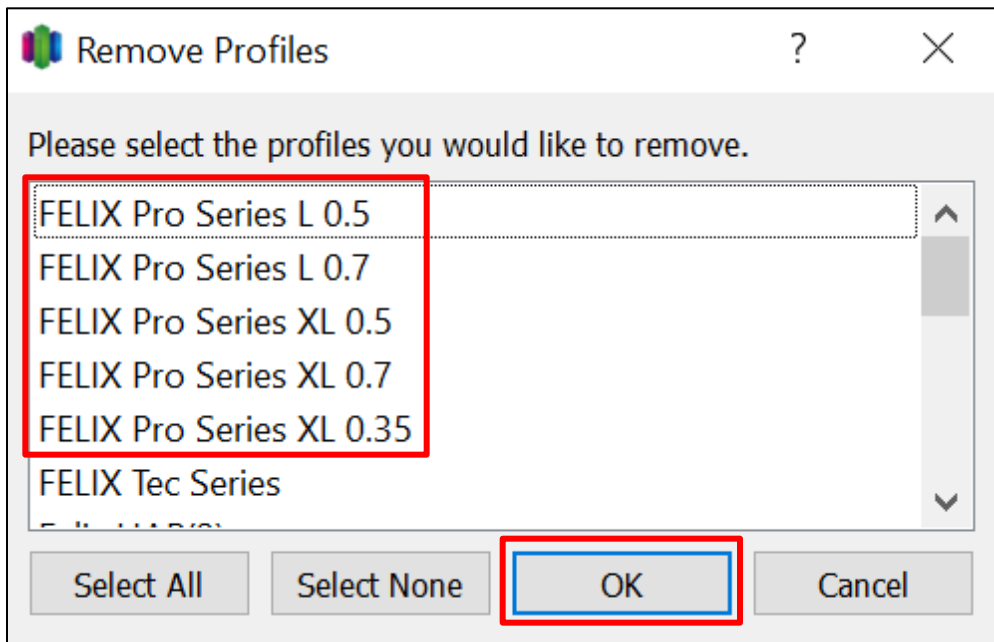
- Open Simplify3D.
- Select "Add".



- Select "Remove".

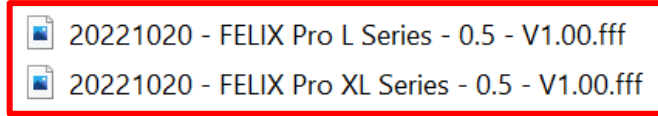


- Select all old L/XL slice profiles you have installed.
- Select "OK" to confirm the removal

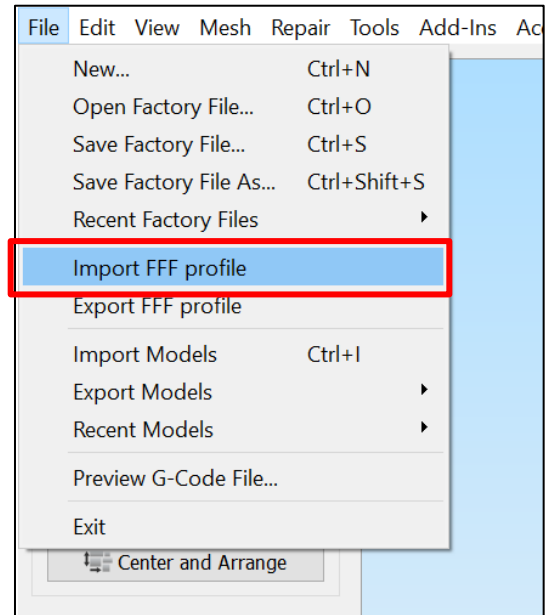
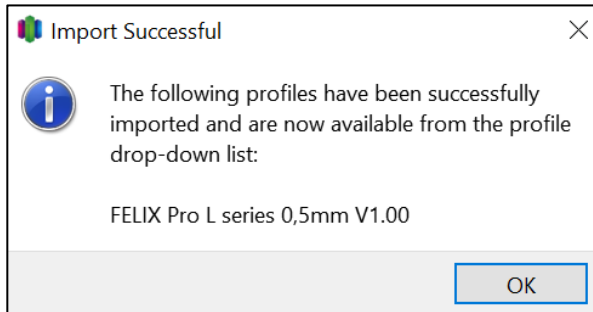


1.2 Import

- Select "File" and "Import FFF profile".
- Select the slice profile for your machine.

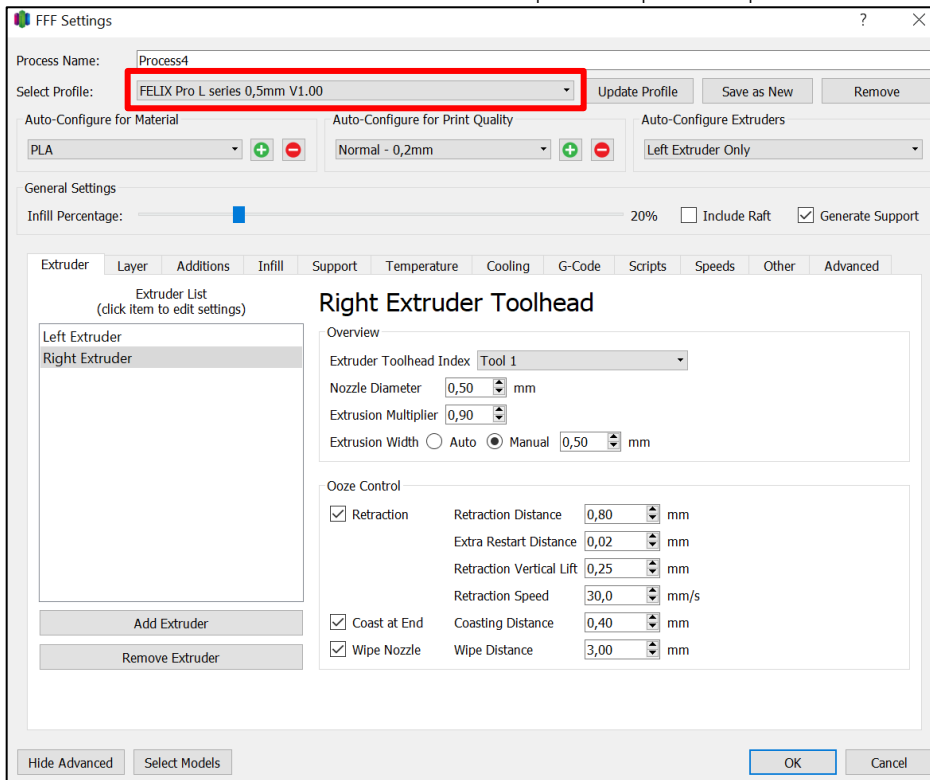


- Make sure you get this message from Simplify3D.



1.3 Process

- Create a new process.
- Make sure to select the new imported printer profile.



You are now be able to use the FELIX Pro L or XL with new slice profiles.

If you are unable to continue or have any questions, you can check at the support section of our website or you can contact us directly:

Website: www.felixprinters.com/support

Email: support@felixprinters.com

Telephone: +31 (0)30 30 31 387

Address: Zeemanlaan 15, 3401MV IJsselstein, The Netherlands

Kind regards,

FELIXprinters