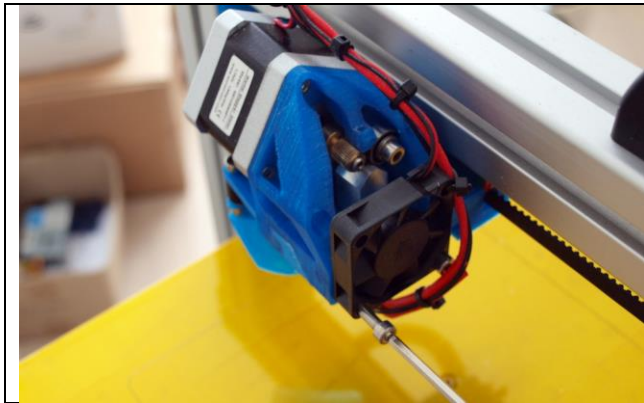


## Service hot-end

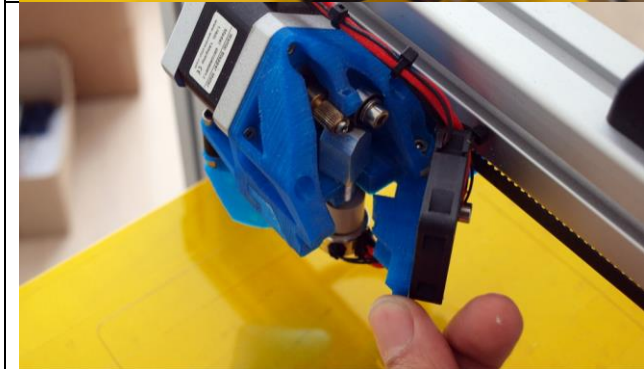
Cleaning out parts from the barrel



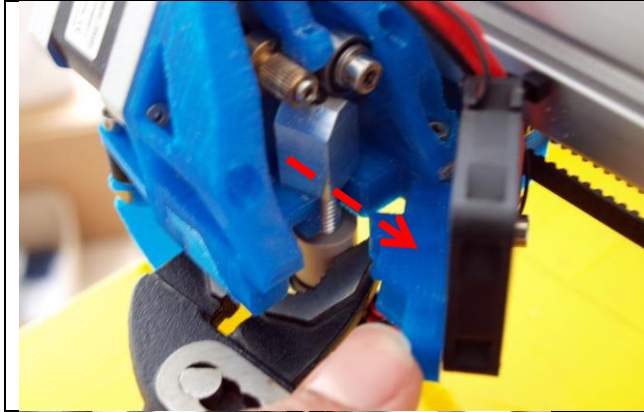
Turn loose screw indicated left



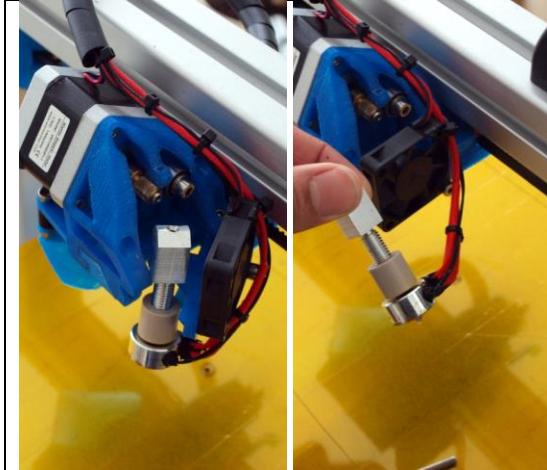
Turn the screw loose 1 or two rotations, so the door can open



Open door



Loosen hot-end from slot with a wrench or other device.



When loosened from slot take out hot-end. Be careful not to stress the wires too much



Grab and fixate the middle PEEK part with a nippers and loosen the top part with a wrench. Turn Counterclockwise to loosen.

